

SUB OPENS TODAY

★ ★ ★



GEORGE FARMER
... he built it

The new Student Union Building will be opened this afternoon at 2 o'clock.

Doug Stewart, President of the UBC Alma Mater Society, and past President of the Victoria College AMS, will officially open the building.

Leslie Peterson, Minister of Education, and the future University of Victoria Chancellor Judge J. B. Clearihue will officiate at the ceremony.

The building was designed by John A. Di Castri and built by Farmer Construction at a cost of about \$355,000, including furnishings, landscaping, allowance for art work and professional fees.

A large proportion of the

cost is being borne by the students through their AMS fees.

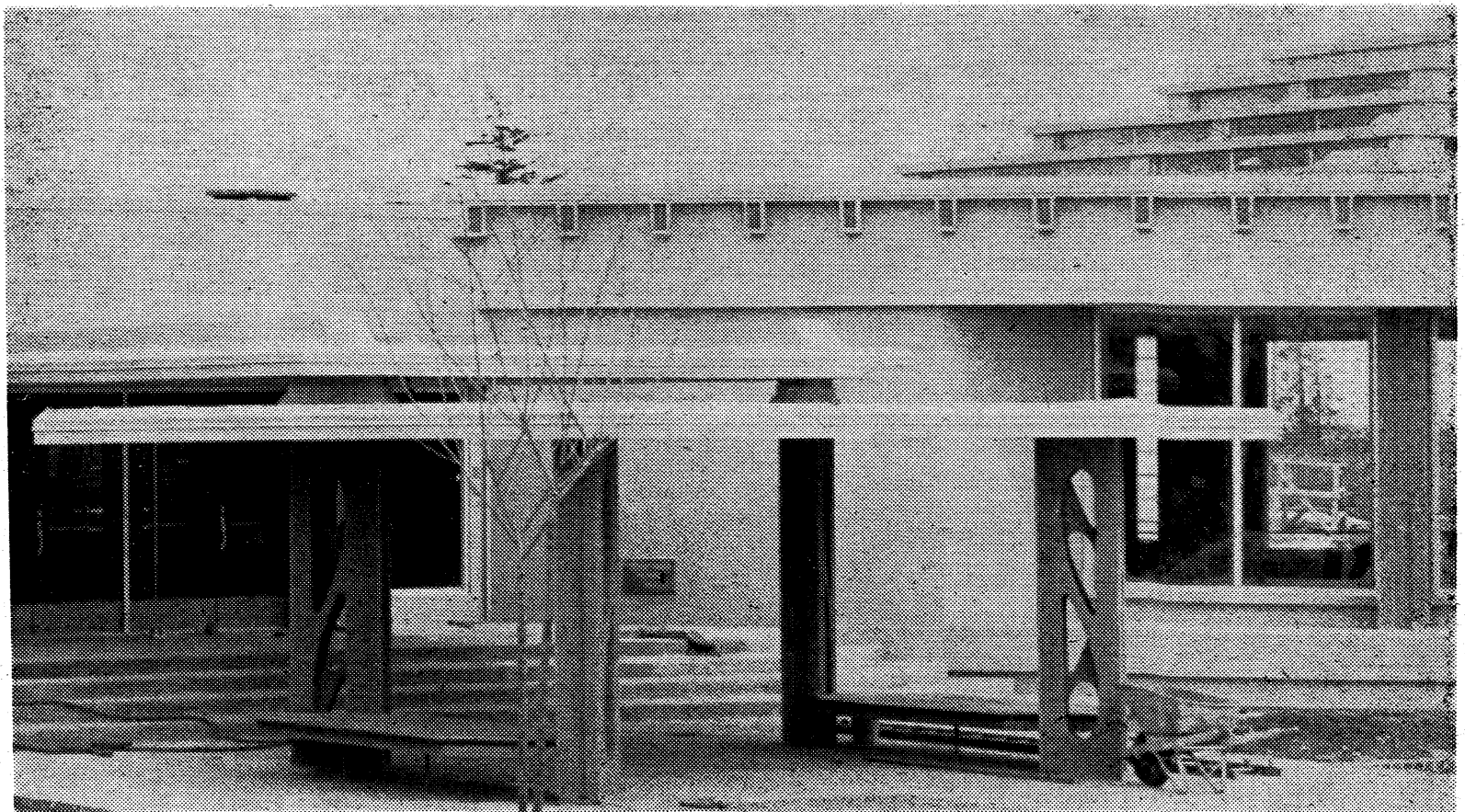
The main floor of the building includes space for AMS offices, Athletic Council Offices, Board Room and rooms for various club activities. The Main Lounge occupies one wing of the building and is designed for symposiums, dances and receptions.

The lower floor provides space for The Martlet, the annual Tower, and other publications, the Radio Club offices and studios. Also included is a "quiet room" for cards, chess or reading, and a coffee lounge equipped with vending machines for light refreshments and for those who bring their own lunch.

★ ★ ★



DOUG STEWART
... he'll open it



Main entrance to the Student Union faces the central area of the new campus which will eventually contain a pool.

THE MARTLET

Published weekly throughout the University year in Victoria by the Publications Department of the Alma Mater Society, Victoria College. Editorial opinions expressed are those of the Editorial Board of The Martlet and not necessarily those of the Alma Mater Society of Victoria College.

Editor-in-Chief: **Tony Else**

Managing Editor..... Jim Bigsby
Photography Editor..... Bruce MacFarlane
News Editor..... Terry Matte

Telephone EV 3-5271, EV 2-9131 (local 11)



COLONIST PRINTERS LIMITED

Editorial

A Symbol

The Student Union Building is a monument to the ability of university students to get things done.

Students took the initiative eight years ago when the Victoria College Students' Council raised Alma Mater Society fees and started a Building fund for what is now the most modern and functional facility on our campus.

The Student Union Building is more than a collection of offices; it is more than an attractive meeting place; it is more than an example of student achievement: it is a symbol of the growing stability and independence of the students of Victoria College.

Bull by the Horns

By **MIKE HORN**

Mixed emotions assail me now that the SUB is about to open. I'm pleased; I'm also jealous. There should have been one five years ago; how happy we would have been. Ah, nostalgia. . . .

We did have a Union Room, in that pre-periodical period, where young frosh and elderly sophs ate lunches, saw party-movies and gyrated to "Rockin' Robin". The following year the Union Room, moved to the now Study Hall, became a preserve for sleeping scholars, recorded music enthusiasts and the legendary Engineers' Dance. In 1960 overtaxed facilities forced the Jive Club into the Union Room once more, as well as classes and, in those dreaded December and April weeks, hordes of students struggling to answer questions in 25 words or less.

We were already paying \$10 per year in the hope of someday entering a building of our own. The Fund Drive made a near probability out of a distant hope, and finally the AMS approved a fee raise to furnish the SUB. It was March, 1961, and the building was to be open within a year: sceptics like myself were voted down.

For many moons the opening date was postponed, but now we're about to enter the Promised Land. Mark March 30th, 1963—mark it well. Make the most of the SUB, and don't abuse the memory of the thousands who paid hard cash—no Diefenbucks in those days—towards its construction. Should that not be enough, remember that you are paying as well.

But if you break faith with those who paid, steel yourselves to meet in battle hordes of alumni who will know what to do with the SUB even if you don't. Shake off apathy and USE IT!

'SUB Designed for People'

By **JOHN A. DI CASTRI, Architect**

This building will be one of three forming the student social center for the campus. This complex will be completed in the future when the cafeteria and bookstore are built. It is planned that covered walkways will connect these buildings which are grouped around a large central space containing a pool.

The Student Union has been designed to reflect the casual exuberant relationship which exists among students. The scale of the building is more intimate than institutional. While central functional control has been maintained, easy flow from one space to another strengthens the general feeling of social exchange that will exist in the building.

OPEN STAIR

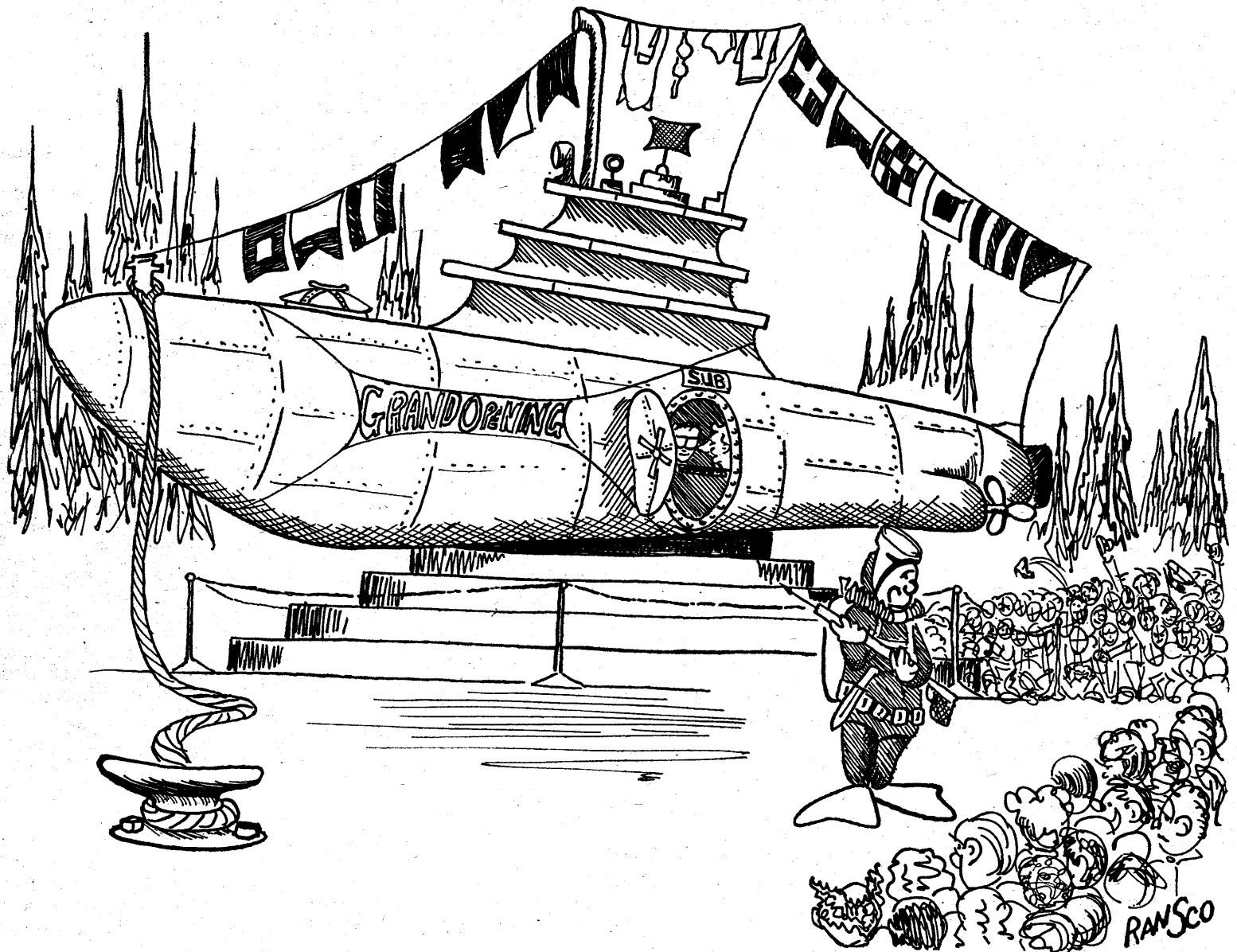
A large canopy covers the approach to the main entrance to the building. A vestibule prevents drafts reaching the foyer and is also utilized for student telephone booths.

The foyer is large enough to contain adequate seating and is centrally located with direct access to all other parts of the building. The general office, facing on the

foyer, assures easy administration. To one side of the foyer, and flanked by a two-storey mosaic tile mural, is the main stair leading to the basement areas. This will be very open so that none of the usual prejudices toward below-grade rooms will exist.

The north end of the main floor contains the Students' Council offices, the Athletic

Continued on page 3



"... and so certain precautions have been taken to prevent any recurrence of the Clearihue disaster of '62."

...Designed for People

Council offices and the board room. There is also a clubs' room which has been provided with two soundproof folding partitions which will permit this space to be divided into three separate areas. Used as a single space, the clubs' room could accommodate 125 people.

Adjacent to the administration offices are the men's and women's undergraduate rooms.

VERSATILE LOUNGE

All rooms have been provided with coat-hanging space and notice boards.

The main lounge, at the south end of the building,

has been designed to be as flexible as possible. The very form of the room lends itself to various furniture groupings. The central area contains a maple floor for dancing. Adjacent to the lounge, limited kitchen facilities will accommodate small social functions. Access from the lounge to the landscaped area is achieved by a bridge which spans the coffee lounge below.

The basement contains men's and ladies' washrooms. Various clubs using a more rough-finished type of space will be accommodated here: They are Publications, Photography, Radio.

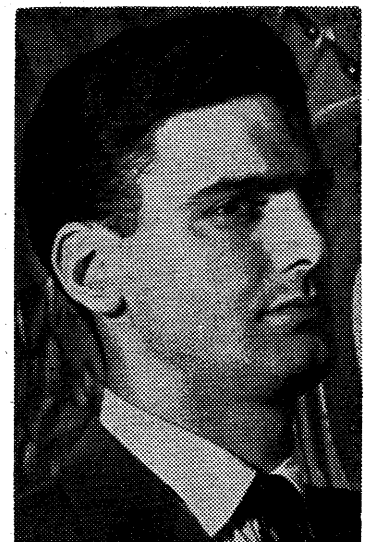
A coffee lounge is located in the basement directly under the main lounge. This

space will contain vending machines for serving. It will open onto a coffee terrace which again will eliminate the basement feeling of this space. This area will be a great place for students to meet to exchange ideas.

INTEGRATED

Throughout the building, areas for art and decoration have been integrated with the architecture so as to create a unified whole and a building environment which will be completely harmonious.

Square footage: 9,500 main floor, 9,500 lower floor, plus 2,200 on the terrace.



JOHN A. DI CASTRI
... he designed it

FIRST MOVE TAKEN BY STUDENTS' COUNCIL

The first concrete move towards the development of the Student Union Building came in January of 1956.

David Edgar, then President of the Students' Council, announced that AMS fees would be raised from seven dollars to thirteen dollars.

Five dollars of this six-dollar raise was marked for the Building fund.

At that time there were about 350 students in Victoria College.

Edgar estimated that the SUB would be completed in "three to five years."

BEHIND EWING

At that time the Gordon Head campus did not belong to Victoria College, so the SUB was tentatively planned to be built behind the Ewing Building.

In 1959 the AMS fees were again raised, and the individual contributions to the Building fund were doubled to ten dollars.

This is the amount each

AMS member now pays into the fund when he registers.

START MADE

On January 20, 1962, Judge J. B. Clearihue turned the first spadeful of earth on the Gordon Head campus.

This marked the beginning of the construction of the classroom block which now bears his name.

But, more significantly, it marked the end of much anxiety on the part of the university planners: we now had "lebenstraum".

DATE SET

At the time of the sod-turning on the Clearihue site, the Student Union Building was in the planning stages. It was then believed that the SUB would be completed by the end of last year.

On March 28, 1962, tenders were called for the new building.

Soon after, the College Council accepted the bid from Farmer Construction.

Who's the Boss of Student Union?

There was some doubt last year that the Student Union Building would be controlled by the students.

College officials had offered to pay part of the cost of furnishings and operation of the SUB, and were reported to have been contemplating setting up a "board of governors" to run the building.

★ ★ ★

STUDENT PETITION

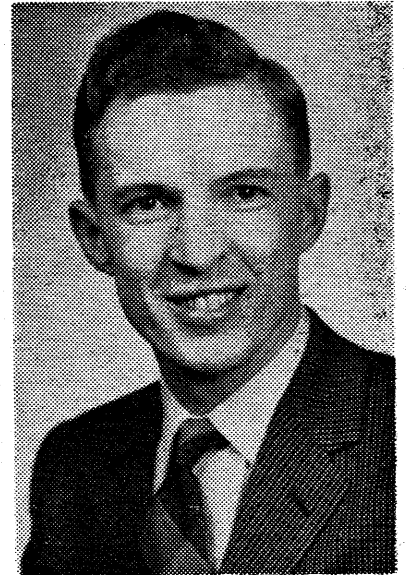
This caused a mild revolt among the students. In April of last year several hundred students signed a petition urgently recommending to the Students' Council that "the proposed Student Union Building be kept under student control."

There is now a Director of the Student Union Building, who is an elected member of the Students' Council, who "officially represents the Students' Council in all matters concerning the management of the SUB."

The SUB Director also provides a liaison between the Council and the administration.

An additional link with the administration is provided by the Proctor of the Student Union Building.

Dick Chudley, ex-accountant and an instructor in the Victoria College UNTD, was chosen last month as the first Proctor.



DICK CHUDLEY
... he helps run it

Although his duties are as yet largely undefined, his main job, as he sees it, is to "assure that the SUB is used to the greatest possible benefit of the students."

Pacific Sheet Metal Works

1009 Yates Street

EV 2-3169

CANADIAN PITTSBURGH INDUSTRIES LTD.

GLASS - PAINT

Phone 382-3166

977 Fort Street

Victoria, B.C.

T. A. HARVEY LTD.

Plumbing & Heating Sales & Service

B.A. FURNACE OIL

554 Johnson Street

EV 2-8276

john di castri architect

1625 Oak Bay Avenue

EV 3-1453

Farmer Construction Ltd.

extends

Congratulations to the
University Development Board
on the opening of their new
Student Union Building